

WELCOME!



AGENDA

- DESIGN PROCESS RECAP
- REPORT BACK - PARKING & SITE ACCESS
- UPDATED BUILDING DESIGN PRESENTATION
- SCHEDULE
- OPEN Q&A

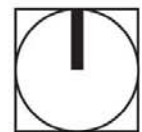
TRAFFIC ACCESS PLAN - Option 1



— Project Boundary

— Vehicular Entry/Exit Option #1

0 200
Scale (Feet)



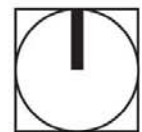
TRAFFIC ACCESS PLAN - Option 2



— Project Boundary

— Vehicular Entry/Exit Option #2

0 200
Scale (Feet)



CIRCULATION & PARKING RECOMMENDATIONS - Option 2



---> Vehicular Entry/Exit Option #2

TRAFFIC ACCESS PLAN - Pros & Cons

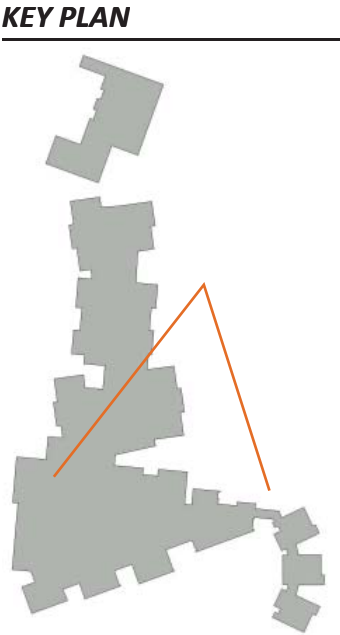
ISSUE	OPTION 1 (TERRAZO CT ACCESS)	OPTION 2 (SOLTERRA VISTA PKWY ACCESS)
VEHICLE QUEUES DURING DROP-OFF/PICK-UP	Better queuing off-street, less traffic delays on Solterra	Less internal queuing, slower traffic on Solterra Vista
POTENTIAL FOR TRAFFIC	Conflicts will be at Solterra Vista at Terrazo	New point for conflicts close to existing intersection
ACCESS ROUTE	Terrazo Court 29 feet wide with residential parking on the east side of the street	Access on wider street, more direct and efficient
NEIGHBORHOOD TRAFFIC INTRUSION	Traffic will use local residential streets, Terrazo is a bit narrow to handle school traffic	Traffic will be mostly on a collector street
PEDESTRIAN SAFETY / INTERSECTION CONTROL	Crossing guard / intersection control needed at Solterra Vista-Terrazo Court intersection and Terrazo Court - Kenmar Way intersection	Crossing guard / intersection control needed at Solterra Vista only.
KINDER PICK-UP/DROP-OFF	Access to Kinder drop-off/pick-up obstructed by site entry queue on Terrazo Court	Access to temporary parking for Kinder drop-off/pick-up available unobstructed on Terrazo Court

 Pro

DESIGN UPDATE - SITE PLAN



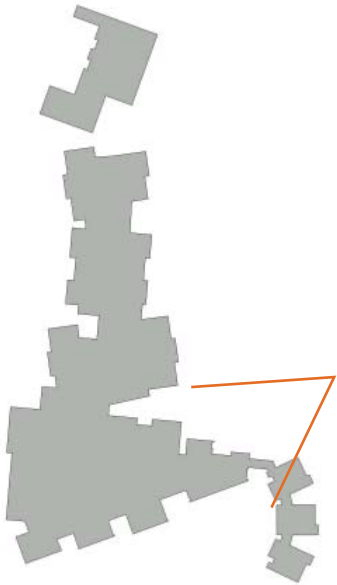
DESIGN UPDATE - CLASSROOM BUILDING



DESIGN UPDATE - MAIN ENTRY & KINDERGARTEN



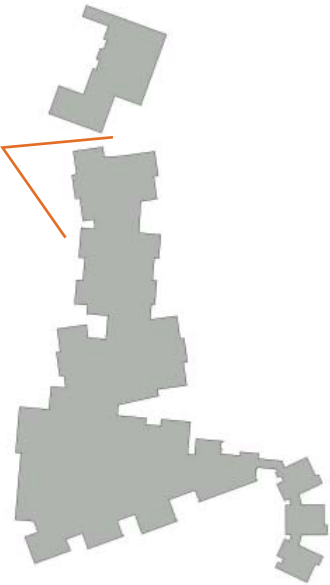
KEY PLAN



DESIGN UPDATE - CLASSROOM BUILDING



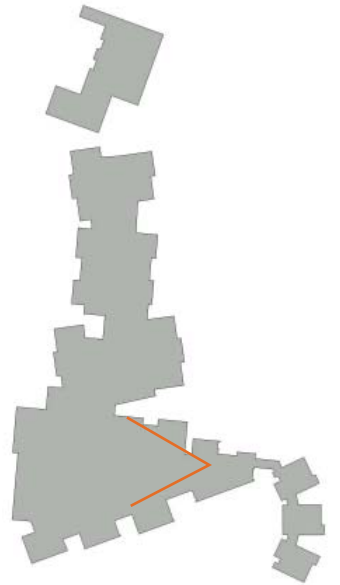
KEY PLAN



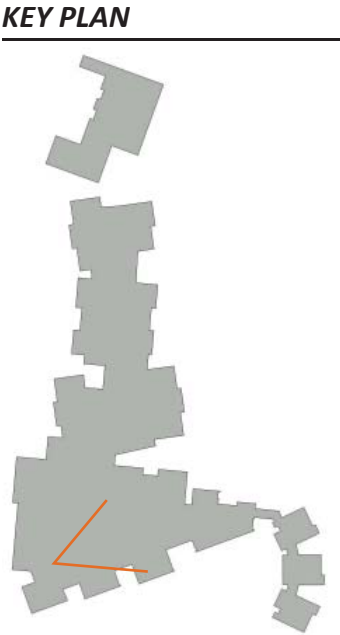
DESIGN UPDATE - INNOVATION CENTER



KEY PLAN

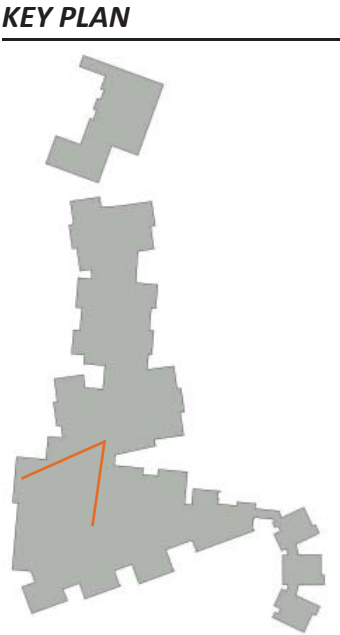


DESIGN UPDATE - INNOVATION CENTER



PACIFIC HIGHLANDS RANCH SCHOOL SEPTEMBER 18, 2019 - COMMUNITY PRESENTATION #4

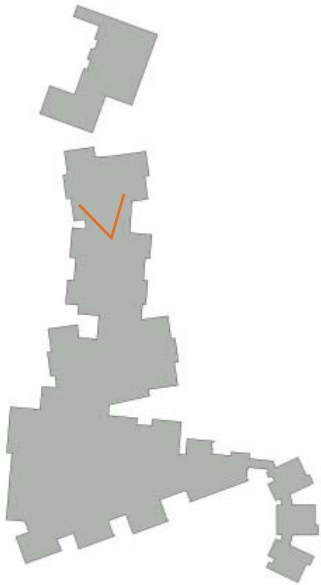
DESIGN UPDATE - INNOVATION CENTER



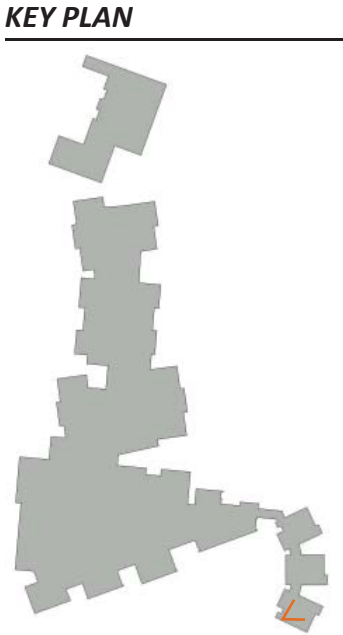
DESIGN UPDATE - CLASSROOM BUILDING INTERIOR



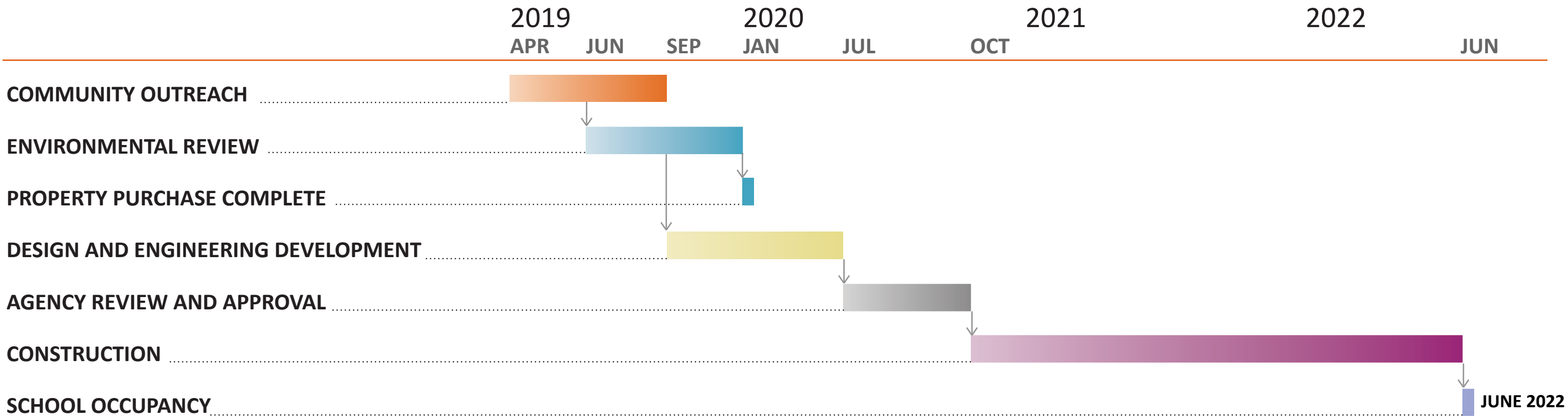
KEY PLAN



DESIGN UPDATE - KINDERGARTEN INTERIOR



PROJECT SCHEDULE



OPEN Q & A

THANK YOU!



forging a path for tomorrow's innovative, global thinkers